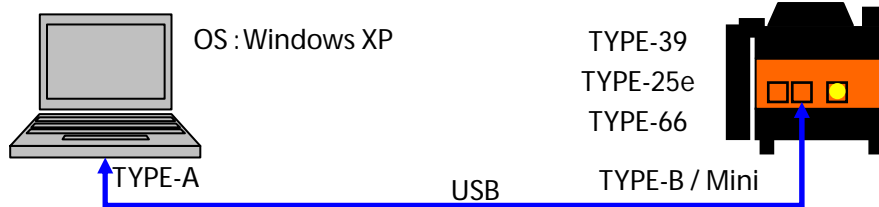
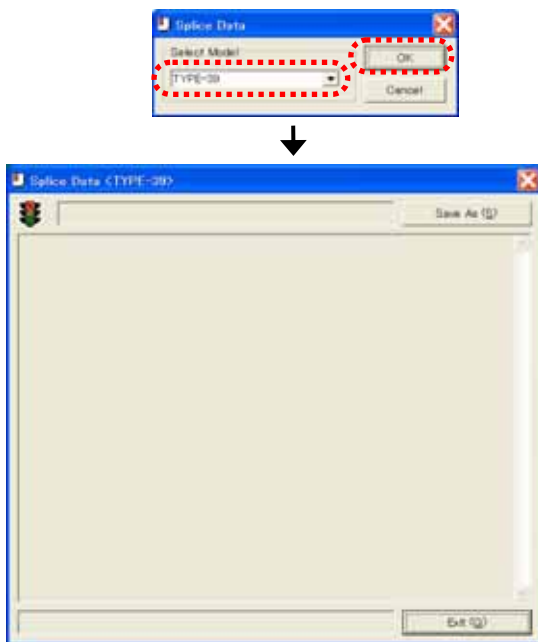


Splice Data Transfer Software

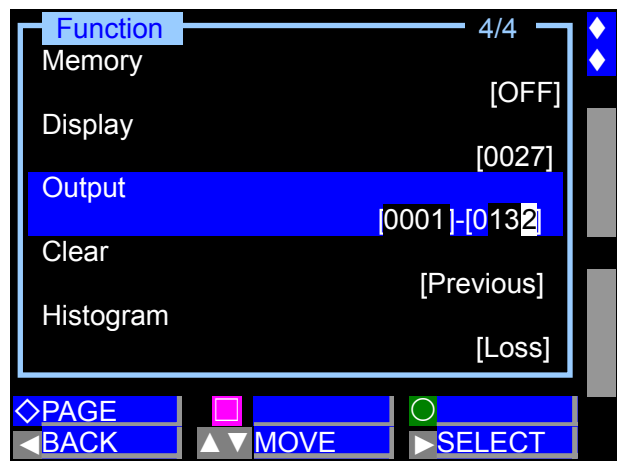
(1) Connect PC to TYPE-39 via USB cable.



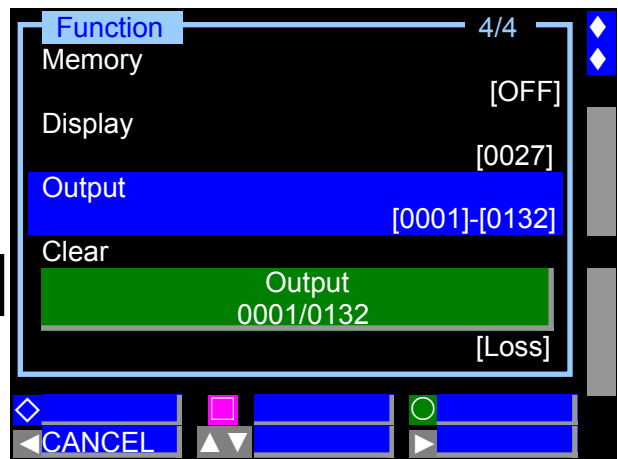
(2) Start "SpliceData.exe" and select Model.



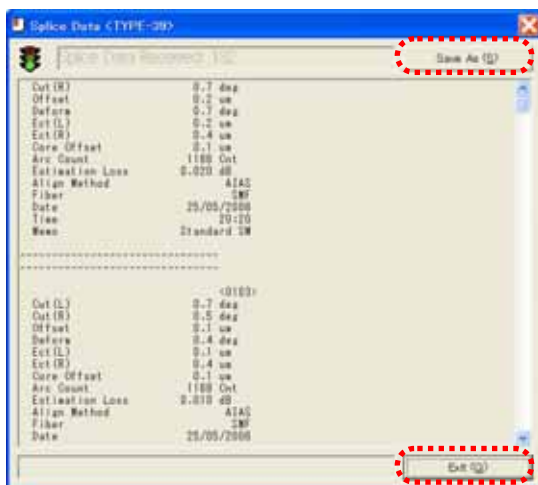
(3) Enter the range of splice data you would like to be downloaded.



(4) Start downloading.



(5) Save the downloaded splice data.



(6) Close the software.

Note:

When USB connection is made for the first time, it takes about 10 seconds to start downloading.