



**Testing
Talking
Tracing**

Providing 21st century technology and innovation.



JDSU/Test-Um is a world-class designer and manufacturer of the best Test, Talk, and Tracing products on the market today. Innovation, feature-packed functionality, and excellent quality are hallmarks of Test-Um products, which our customers have come to expect. In May of 2006, JDSU, a world-class provider of solutions for broadband and optical markets, acquired Test-Um Inc. Test-Um is now part of JDSU's Global CommTest group, which has offices around the world and gives a new capability in reach, resources and research to help us deliver to our customers the best new products for the latest test and measurement applications.



JDSU/Test-Um continues our dedication to growing our product line with new and imaginative designs that help installers and all cabling professionals do their jobs faster and more efficiently. U.S. manufacturing and extensive R&D efforts result in the most up-to-date products, using the latest technology. The combined strength of the JDSU CommTest group with Test-Um's innovative and fast product development will result in the quickest and most efficient new product flows in Test-Um's history.

Visit our web site at www.Test-um.com to find the distributor sales representative nearest you. Our web site also offers online technical/customer support, as well as a wealth of information about our products, including instruction manuals, comparison charts, and frequently asked questions (FAQs). For other JDSU test and measurement products, visit JDSU.com.



Contents



4 **Certification**

- 4 Validator™ Network/Cabling Certifier
- 5 Validator-NT™ All-in-One Network Management Tool

6 **Wireless**

- 6 Wi-Net Window Wireless Network Analyzer

7 **Testing**

- 7 LanScaper™ Network Tester
- 7 Tell-All Indicator
- 8 LanRoamerPRO™ Tester/Analyzer
- 8 LanRoamer™ Tester/Analyzer
- 9 Resi-Tester™
- 9 Testifier™
- 10 Master Wiremapping Kit
- 10 Coax Mapper
- 10 Satellite Finder

11 **Talking**

- 11 Lil' Buttie™ Test Set
- 11 Lil' Buttie Pro™ Test Set
- 12 Ranger™ DSL-Safe Test Set
- 12 Talk N Trace™
- 13 Resi-Talker™ Test Set
- 13 Telephone Test Set Accessories

14 **Tracing**

- 14 Tone Tracer High-Sensitivity
- 14 Resi-Tracer™
- 14 Tone Generator Multi-Function
- 15 Turbo-Tone™ High-Powered Tone Generator
- 15 Latch-Test™ Security Alarm Tone Generator
- 16 Resi-Toner™ Home Networking Tone Generator
- 16 Speaker Seeker™ Wiremapping Tool
- 16 Tone Tracer and Tone Generator Accessories

17 **Kits**

- 17 Signal Tracing
- 18 Telephone and Signal Tracing
- 21 Network Testing
- 22 Network Testing and Tracing
- 23 Home Automation and Networking

26 **Accessories**

27 **Product Feature Comparison**



Removable 32 MB compact flash memory card included



Dedicated I/O ports for network, telephone, coax and paired cables

Validator™ Network/Cabling Certifier NT950

Define the job, make the tests, print the results, store the data... no other tester/certifier does so much, so easily and so economically. Validator™ measures and presents fast and clear SPEED and PERFORMANCE results up to 1 gigabit. The included powerful Plan-Um™ software ties together all the different cable criteria that are found in complex voice/data/video installations and presents concise information in printed reports, while storing data for future use.

Speed certification assures your customer that the cabling will do the job it is rated to do. Attached components, switches, hubs, routers and systems will then operate at maximum efficiency.

Completing and billing a cable installation job has never been easier. Simply layout your customer's requirements in a matter of minutes, then define cable types and runs. Test/certify each cable run. Print the results and attach them to your invoice. That's all there is to it.

- Certifies CAT5, CAT5E, and CAT6 cables to be IEEE compliant to 1 gigabit speed
- Tests to TIA 568/570 interconnect standards
- Tests coax, telephone, audio, and security cables
- Includes powerful Plan-Um™ Cabling Project Management software
- Creates and prints job reports and cable labels
- Wiremaps new or existing cable systems
- Simple to use

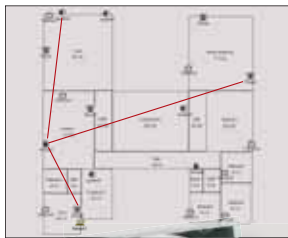


- NT950 includes:
- Validator™ • Smart Remote
 - 2 lithium ion rechargeable long-life batteries
 - 2 AC adapter/charger units • 4 adapter cable assemblies • USB cable assembly • Compact flash card • Plan-Um™ design layout software
 - Deluxe carrying case with cushioned sides NT 930

Validator™ gives you 4 steps to more professional, productive and profitable installations...

1. Layout

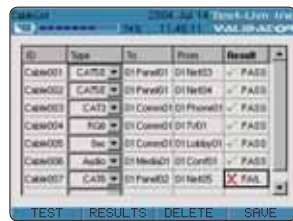
Create customer floorplans. Add outlets and wire runs.



Powerful Plan-Um™ software included

2. Certify

Test, certify, upload results. All tests saved against job layout.



3. Document

Each completed job defined and saved. Finished job report printed for billing.



4. Archive

Create custom databases of finished installations for easy reference.



NEW



4" color LCD screen
Lithium/ion battery provides
8 continuous hours of use
Unlimited flash card memory

Validator-NT™ All-in-One Network Management Tool NT955

No other tester/certifier does so much, so easily and so economically. Validator-NT's patented method of uploading and downloading information about cable tests and network configuration will help you gather the necessary information to manage your network easily, while documenting changes, upgrades or new configurations. Clear, fast Speed and Performance Certification up to 1 Gigabit combines with powerful planning software and active network capabilities to give you the complete tool for installing, managing and fine-tuning any Ethernet network.

- Certifies CAT5, CAT5E and CAT6 Ethernet cables to be IEEE compliant to 1 gigabit speed for all Ethernet systems
- Tests to TIA 568/570 interconnect standards
- Tests coax, telephone, audio, and security cables
- Qualifies VoIP lines
- Includes powerful Plan-Um™ Cabling Project Management software
- Creates and prints job reports and cable labels
- Active network capabilities for test, link and identification
- Certify, identify, configure and document your network



Carry Pouch NT935
for Validator and Validator-NT

This optional carrying case for the NT950/ NT955 main unit has a convenient shoulder strap and a built-in folding base for standing it up on a flat surface for hands-free operation.



NT955 includes: • Validator-NT™
• Smart Remote • 2 lithium ion rechargeable long-life batteries
• 2 AC adapter/charger units
• 4 adapter cable assemblies
• USB cable assembly • Compact flash card • Plan-Um™ design layout software • Deluxe carrying case with cushioned sides NT 930

Validator-NT™ gives you everything you need to test, trace and tune your Ethernet network...

1. Certify individual Ethernet cable runs up to 1 Gigabit Speed per IEEE802.3 specifications. Test for TIA568 Interconnect problems. Determine fault locations, cable length and delay or noise conditions. Produce and print cable test schedules and cable test results. Qualify lines for VoIP usage.

2. Identify active components of your network on the other end of the cable. Identify all types of equipment and port service discovery with advertised speed ratings and DHCP negotiation. Access IP addresses, ping equipment and flash hubs/switches for positive port location.



3. Configure links between nodes at Gigabit speed. Check IP addresses on netmask, Gateway/routers and domain name servers. Confirm links between equipment for changes or upgrades.

4. Document the network with the included powerful Plan-Um™ software.

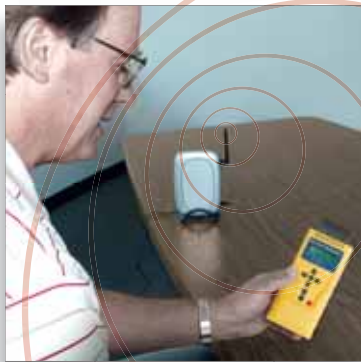
Create layouts of offices/premises or import existing Visio/AutoCAD drawings. Show cables and equipment they connect to in physical locations. The Network Tool

section of Plan-Um™ allows you to create a complete topology layout of the network for on-site reference, showing connections, equipment and cable pathways. You can add notes to each component of the network for future add, changes, and move legacy information.

5. Print layouts and corresponding Cable Test Schedules, for the customer or your records. Print custom labels to identify cable runs as you test them.

Plan-Um™ is compatible with Brother label printers.





Wi-Net Window™ Wireless Network Analyzer WP150

To install, expand or operate a wireless network you need to be able to see critical information about where the best location is for components, what access should be allowed and where or what security is in place. The new handheld Test-Um Wi-Net Window Analyzer gives you all the critical information you require and more! Take a look at all of its advanced features:

- Full alpha/numeric LCD display shows all information clearly and completely
- Picks up IEEE802.11 wireless signal types b and g
- Signal strength shown as a lighted bar and as a percentage for clarity
- Shows component name and channel of transmission
- Lists and logs all received wireless transmissions in the area for inspection with constant scanning
- Audible network pick-up signal
- Displays encryption condition on each wireless component
- Lists each signal as either an access point, an ad-hoc or Twin network type
- Ping function accesses IP addresses and determines an internet link condition
- Negotiates with network DHCP for component ID
- Shows router, DNS and target information
- Auto-off
- Lightweight: less than 8 oz with batteries installed

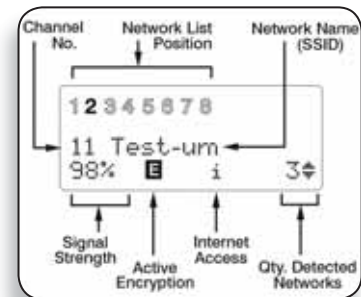
WP150 includes: • Wi-Net Window™

Includes New WEP Encryption Feature

Wi-Net Window supports WEP (Wired Equivalent Privacy) Encryption. This feature permits the user to enter a WEP key that allows Wi-Net Window to communicate with an encrypted wireless access point. When scanning encrypted networks, the user will be able to perform ping functions on encrypted wireless access points if he has the correct key.

Scan Testing for WiFi Signals

Wi-Net Window shows all the detection information needed to determine the wireless environment and pertinent parameters of equipment being used in the vicinity of proposed installed components. The clear alpha/numeric LCD display shows signal strength, encryption condition, channel transmission, etc., as shown at right.



Advanced Mode Ping Functions

In addition to critical information of signal environment, the Wi-Net Window has an Advanced Mode that can access the DHCP of a network to confirm an IP address of a target or DNS component. Multiple pinging of up to 4 targets can be done in Advanced Mode and IP addresses can be customized.

```
BA-oetgear_Wm_o
<>ttr----CE=CD
```

```
◆BMC<BHL<AAC<ACE
chbr-hostRttr-ir
```

```
◆BMC<BHL<AAC<AAM
chbrN-cou-urv-ir
```

Normal	Advanced	Description
l	Intr	Internet access is available
x	In Use	My IP is already in use
	ip	My IP assigned by DHCP
	ap	Connected to access point
	adhoc	Ad-hoc network (peer-to-peer)
t	twin	2 WLANs have the same SSID and channel
	b	802.11b access point
	g	802.11g access point

Easy Icon Information

The chart shows what each symbol means in both the Normal and Advanced Modes of operation.



LanScaper™ Network Tester NT700

The first in a new line of Physical Layer Network Management Devices, the LanScaper™ combines the functions of a high-end cable tester and length measurement device with the capability to monitor and correct network problems connected with the physical layer and link conditions of the network.

- Identifies port services including Ethernet, ISDN, POTS, and Token-Ring while reporting such crucial information as network speed, capability, and location of other network devices
- Pinging function verifies connectivity to network devices and queries PC/NICs
- Detects legacy "Phantom Power", reports current and voltage capability of analog telephone lines, identifies (maps) remotes while cable testing
- Conducts link tests to ID speed
- Verifies functional speed capability of terminated unconnected cable runs by sampling data packets between two LanScaper™ units, which exercises the run and reports the result
- Automatically accesses DHCP host and obtains network information
- Tests cabling configuration and verifies connectivity and length of run while conducting tests for opens, shorts, miswires, split pairs, and reversals
- Identifies HUBs, NIC, or auto MDI/MDI-X devices
- Blinks HUBs to ascertain connected configuration
- Displays advertised network speed/duplex
- Measures and reports any voltage on lines
- Wiremaps network connections with remote identifiers
- Generates multiple tone levels for signal tracing and cable identification

LanScaper™ Kit

NT750 Includes:

- LanScaper™
- Remotes #1-#8
- Tone tracer TT100
- 12" cable assembly, RJ45 to alligator clip set, 2 pieces TP40
- 12" cable assembly, unshielded RJ45 connectors, 2 pieces TP56
- RJ45 to F connector, 2 pieces TP50
- 7.5" cable assembly with no-fault RJ12 connectors for RJ11 and RJ45 jacks, 9 pieces TP20
- Carrying case PC400



NT700 includes: • LanScaper™ • Remote #1 • 12" cable assembly, RJ45 to alligator clip set, 2 pieces TP40 • 12" cable assembly, unshielded RJ45 connectors, 2 pieces TP56 • 7.5" cable assembly with no-fault RJ12 connectors for RJ11 and RJ45 jacks, 2 pieces TP20 • Pouch PC150

LanScaper™ Accessories

- TP20 7.5" cable assembly with no-fault RJ12 connectors for RJ11 or RJ45 jacks. The connectors assure no damage to RJ45 jacks.
- TP40 12" cable assembly, RJ45 to alligator clip set
- TP50 Adapter, RJ45 to F coax, 1 piece
- TP55 12" cable assembly, shielded, RJ45 connectors
- TP56 12" cable assembly, unshielded, RJ45 connectors
- TP60 Adapter, RJ45 plug/RJ11 jack, 2 pieces
- TP608 Set of 7 network remote identifiers (#2-#8)
- TP609 #1 replacement remote identifier
- PC400 Carrying case, holds one LanScaper™ or LanRoamerPRO™ Kit with remotes



Tell-All Indicator TP100

Identifies telephone and data lines.

- Identifies 10Base-T, Token Ring and 100Mbit Systems
- Includes a built-in battery
- Detects voltage and polarity

Tell-All Accessories

- TP10 Replacement jumper cable includes standard RJ45 on one end and unique modular plug on the other end that works with both RJ11 and RJ45 jacks
- TP56 12" cable assembly, unshielded, RJ45 connectors



LanRoamerPRO™ Tester/Analyzer TP600

This high-performance length measurement CAT 5/6 tester identifies multiple faults clearly without interpretation for fast results; clear wiremapping form displayed on 2-line, 16-character LCD display; and measures cable length.

- Measures cable length as a stand-alone function
- Test for short, opens, miswires, reversals, and split pairs
- Identifies multiple faults clearly without interpretation
- Clear wiremapping form displayed in 2-line, 16-character LCD display
- Auto-off/Auto-on—Up to 10 times better battery life than other testers
- One-ended testing with Pre-test mode for fast results
- Built-in tone generator with selectable tones and pair capability

TP600 includes: • LanRoamerPRO™ • Remote #1 • 12" cable assembly, RJ45 to alligator clip set TP40 • 12" cable assembly, unshielded RJ45 connectors, 2 pieces TP56 • Wire configuration sticker • Laminated quick reference card • Pouch PC150

Associated Kits with LanRoamerPRO™ are on pages 21–23.
Kit numbers: KP450, KP501, KP506-A, KP601, KP602-A.

LanRoamerPRO™ Kit with 8 remote identifiers



TP607 Includes:

- LanRoamerPRO™
- Remotes #1–#8
- 12" cable assembly, RJ45 to alligator clip set TP40
- RJ45 to coax adapter, 2 pieces TP50
- 12" cable assembly, unshielded RJ45 connectors, 2 pieces TP56
- Wire configuration sticker
- Laminated quick reference card
- Carrying case PC400

LanRoamer™/LanRoamerPRO™ Accessories

- TP40 12" cable assembly, RJ45 to alligator clip set
- TP50 Adapter, RJ45 to F coax, 1 piece
- TP55 12" cable assembly, shielded, RJ45 connectors
- TP56 12" cable assembly, unshielded, RJ45 connectors
- TP60 Adapter, RJ45 plug/RJ11 jack, 2 pieces
- TP62 Adapter, F plug to BNC jack
- LB32 24" cable assembly, "F" push-on plug to alligator clip set
- LB34 18" cable assembly, "F" push-on plug to RJ11 plug
- PC400 Carrying case, holds one LanScaper™ or LanRoamerPRO™ Kit with remotes
- TP608 Set of 7 network remote identifiers (#2–#8)
- TP609 #1 replacement remote identifier



LanRoamer™ Tester/Analyzer TP500

Offers a new price/performance level for verification of wiring faults and configurations on all your data cable.

- Cable test results displayed on main unit and remote unit in less than 2 seconds after plugging in the cable
- Auto-on and auto-off—when testing cables, just plug both ends into tester!
- Snap-together case for easy storage and convenient patch cable testing
- Tone generator mode for use with tone tracers, auto-off
- Debug mode with from/to and failures for each pair
- Test for short, opens, miswires, reversals, and split pairs
- Battery low indicator

TP500 includes: • LanRoamer™ • Remote #1 • 12" cable assembly, unshielded RJ45 connectors, 2 pieces TP56 • Pouch PC150

Associated Kits

with LanRoamer™ are on pages 21–23.
Kit numbers: KP500, KP600, KP605-A.

Accessory

- TP505 LanRoamer™ #1 replacement remote



Resi-Tester™ Whole-House Cable Tester TP300

This identifier and verification tester is designed exclusively for all home networking and home automation wiring environments—CATV, telephone systems, audio cable, security/alarm wiring, and network cabling. Multiple input ports and adapter cables enable any wire to be attached and tested!

A large, easy-to-read LCD displays cabling results, showing all the faults connected with the various cable types. It warns of voltage on lines and shows a Pass or Fail message after each test.

The built-in tone generator sends a signal through installed wires, so that they can be traced in the walls, with the exact terminus identified. The built-in remote identifies individual outlets as phone, cable, or data network. Using the optional multi-identifier sets, connections on up to 20 coax outlets and 20 paired cables can be wiremapped simultaneously, with ease and efficiency.

Associated Kits

with Resi-Tester™ are on pages 23–24. Kit numbers: KP312, KP314, KP315.

TP300 includes: • Resi-Tester™ • #1 replacement remote TP309
• #1 coax remote identifier TP65 • 12" cable assembly, RJ45 to alligator clip set TP40 • 7.5" cable assembly with no-fault RJ12 connectors for RJ11 or RJ45 jacks TP20

Testifier™ Kit

KP550 Includes:

- Testifier™
- Coax wiremapper set, 20 pieces TP311
- RJ45 wiremapper set, 20 pieces TP312
- RJ11 wiremapper set, 20 pieces TP314
- Individually-numbered unterminated remote identifiers, 20 pieces TP315
- Carrying case PC400



Resi-Tester™/Testifier™ Kits and Accessories

- | | | | |
|-------|---|-------|---|
| LB34 | 18" cable assembly, "E" push-on plug to RJ11 plug | TP311 | Set of 20 coax remote identifiers |
| TP20 | 7.5" cable assembly, with no-fault RJ12 connectors for RJ11 or RJ45 jacks. | TP312 | Set of 20 RJ45 wiremappers |
| TP40 | 12" cable assembly, RJ45 to alligator clip set. | TP314 | Set of 20 RJ11 wiremappers |
| TP68 | 24" cable assembly, RJ45 with 8 alligator clips for use on multiple unterminated cables | TP608 | Set of 7 network remote identifiers (#2–#8) |
| TP310 | Set of 10 (1–10) coax remote identifiers | PC400 | Carrying case for main unit and remotes |
| | | TP65 | Replacement #1 coax remote identifier |
| | | TP309 | Replacement #1 remote identifier |



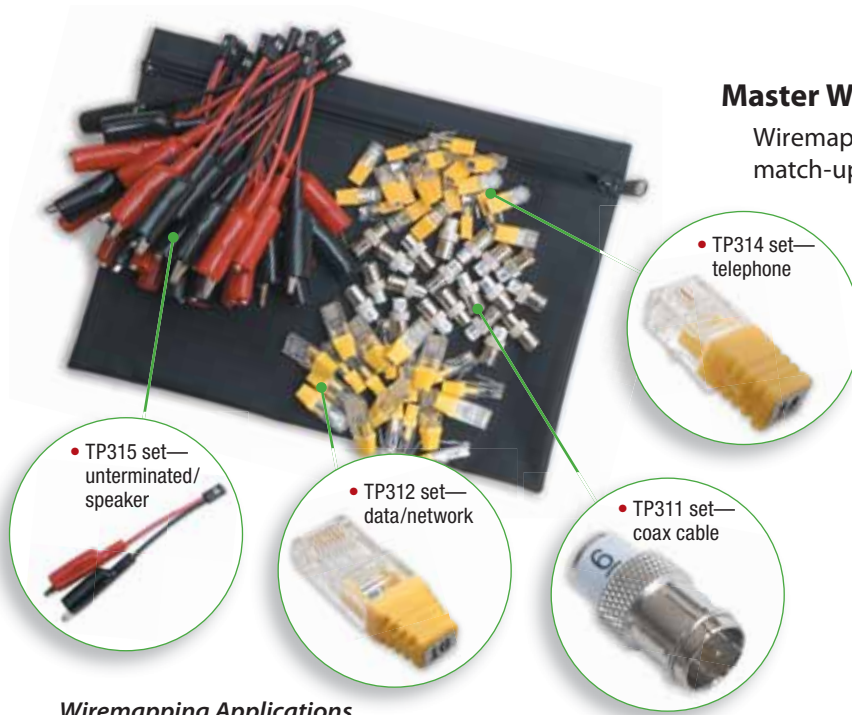
Testifier™ TP350

NEW

The new Testifier™ produces the most accurate and easy-to-understand results of any cable tester/verifier on the market. Its large LCD display is easy to read—it shows a clear picture of a wired cable: data, coax, telephone, security/alarm, or unterminated site wire. It tests them all!

- **Condition:** shows Opens, Shorts, Miswires, Split Pairs, PASS and FAIL results fast.
- **Location:** supported by the most comprehensive set of wiremapping locators—up to 20 cable end locations at a time can be identified and tagged.
- **Position:** built-in tone generator is flexible and function-packed. Its configurable signal can be generated to find and fix the position on any type of cable—either exposed or hidden, in ceilings or behind walls.

TP350 includes: • Testifier™ • #1 replacement remote TP309
• #1 coax remote identifier TP65 • 12" cable assembly, RJ45 to alligator clip set TP40 • 7.5" cable assembly with no-fault RJ12 connectors for RJ11 or RJ45 jacks TP20



Master Wiremapping Kit KP420

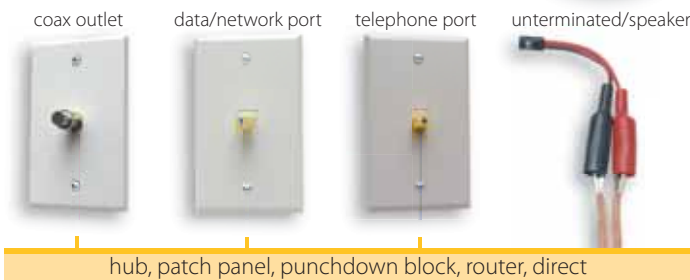
Wiremapping is the ability to identify and match-up both ends of installed cable.

Use these remote identifiers to find the end location of any type of cable run—network, telephone, audio or coaxial.

Wiremaps up to to 20 locations at a time, using either the Resi-Tester™ (TP300) or Testifier™ (TP350).

Each wiremapper set contains remote identifiers that are specially wired and individually identified with numbers 1 through 20. When testing the end of a cable run with any Test-Um network tester, its LED readout displays the unique number of the remote identifier attached to the other end of the run.

Wiremapping Applications



KP420 Kit includes:

- Coax wiremapper set, 20 pieces TP311
- RJ45 wiremapper set, 20 pieces TP312
- RJ11 wiremapper set, 20 pieces TP314
- Individually-numbered unterminated remote identifiers, 20 pieces TP315
- Zippered pouch



Coax Mapper CX200

Designed for testing CATV and security camera coax connections and installations.

- Finds and identifies multiple coax cables
- Includes 4 color-coded F-connectors and BNC adapters
- Built-in tone generator

Coax Mapper Accessories

- CX31 Replacement #1 brown terminator
- CX32 Replacement #2 red terminator
- CX33 Replacement #3 orange terminator
- CX34 Replacement #4 yellow terminator



Satellite Finder CS300

This signal strength meter is a simple mechanical device used to maximize a satellite signal between the LNB amplifier and the receiver.

- The CS300 is easy to use and very inexpensive
- Perfect for installing and setting up direct satellite systems
- Packaged in a clear-view hang-up clamshell
- Less money than most competitive models available
- Rugged ABS body
- Easy-to-read analog display
- Frequency Range: 950 MHz–2,050 MHz
- Variable attenuator for ultra-fine tuning capability
- Powered by satellite receiver, no batteries required



Lil' Buttie™ Test Set LB100/LB110/LB115

Hands-free test set with headset. At half the size and half the weight, it establishes a new standard in field test sets.

- Tone and Pulse Dialing
- Microphone Mute
- Last Number Redial—32 Digits
- Continuous Line Polarity Indication (TALK or MONITOR)
- Electronic Ringer
- Amplified Line Monitor for volume levels comparable to “off hook” operation
- Modular Cord Set Attachment
- Low Battery Indicator
- Headset Jack
- Battery Powered Monitor Mode with auto-off on dead lines or when disconnected

Associated Kits with Lil' Buttie™ LB110 are on page 18. Kit numbers: KP200, KP300.

Lil' Buttie™ Test Set with piercing clip set LB100

Includes:

- Lil' Buttie™
- Piercing clip set LB25
- Mini headset LB40
- Metal belt clip

Lil' Buttie™ Test Set with bed of nails cord set LB110

Includes:

- Lil' Buttie™
- Bed of nails cord set LB35
- Mini headset LB40
- Metal belt clip

Lil' Buttie™ Test Set with bed of nails cord set and AT&T snap clip LB115

Includes:

- Lil' Buttie™
- Bed of nails cord set LB35
- Mini headset LB40
- AT&T hook/clip assembly, yellow LB70



Lil' Buttie Pro™ Test Set LB220/LB230

Telephone test set with LCD readout and voltmeter.

- Five Number Memory
- Technical Support Number programmed into memory dial
- Tone and Pulse Dialing
- Microphone Mute
- Last Number Redial—19 Digits
- Electronic Ringer
- Amplified Line Monitor for volume levels comparable to “off hook” operation
- Modular Cord Set Attachment
- Headset for hands-free use
- Auto Power Off eliminates dead batteries
- LCD Display shows—
 - On-hook voltage
 - Number dialed
 - Off-hook current
 - Set-up information
 - Stored numbers
 - Battery condition
 - Continuous polarity indication
 - Caller ID
 - Call waiting/Caller ID
 - Caller ID errors
 - Tone and Pulse Dialing

Associated Kits with Lil' Buttie Pro™ LB220 are on pages 18–22.

Kit numbers: KP220, KP400, KP401, KP406, KP500, KP501, KP600, KP601.

Lil' Buttie™ Test Sets with Protective Boot

- LB110-BT, same as LB110 with Protective boot LB81
- LB220-BT, same as LB220 with Protective boot LB81



Lil' Buttie Pro™ Test Set with bed of nails cord set LB220

Includes:

- Lil' Buttie Pro™
- Bed of nails cord set LB35
- Mini headset LB40
- Two-piece belt clip LB60

Lil' Buttie Pro™ Test Set with bed of nails cord set and AT&T snap clip LB230

Includes:

- Lil' Buttie Pro™
- Bed of nails cord set LB35
- Mini headset LB40
- AT&T hook/clip assembly, yellow LB70



Ranger™ DSL-Safe Test Set LB255

Our most powerful test set, it incorporates a built-in amplified speaker, plus advanced features unavailable on any other test set in the market.

- **DigiView™**—DTMF Decode allows you to see the digits as a dial-out is in progress and capture them.
- **ADLI™ Auto Dial Line Identification**—Inbound and outbound line identification with caller ID testing.
- **Trafixguard™**—Senses digital lines and identifies under- and over-voltage conditions. Totally DSL safe!
- **Insta-Talk™** Amplified Speaker with simultaneous intercom capability for talking while testing.
- Amplified Speaker with 3 volume levels
- Enhanced Memory Dialing—alpha and numeric capability
- Eight-number Memory
- Tone and Pulse Dialing
- Microphone Mute
- Last Number Redial—24 Digits
- Electronic Ringer
- Amplified Line Monitor for volume levels comparable to “off hook” operation
- Modular cord set attachment
- Headset for hands-free use
- Auto power-off eliminates dead batteries
- LCD display shows—
 - On-hook voltage
 - Number dialed
 - Off-hook current
 - Set-up information
 - Stored numbers
 - Battery condition
 - Continuous polarity indication
 - Caller ID
 - Call waiting/Caller ID
 - Caller ID errors

LB255-BT includes:

- Ranger™ with ADLI
- Bed of nails cord set LB35
- Mini headset LB40
- Protective boot LB81

Associated Kits with Ranger™

are on pages 19–23. Kit numbers: KP402-A, KP403, KP407, KP506-A, KP602-A, KP605-A.

LB255 includes:

- Ranger™ with ADLI
- Bed of nails cord set LB35
- Mini headset LB40
- Nylon pouch LB80

Talk N Trace™ KP110

The hands-free personal communications set that can be used in any wiring environment

- Clear, clean voice communication without interference or “dropouts” over coaxial cable, audio cable, speaker wire, telephone lines, or common electrical wiring
- Trace wires simultaneous while talking
- Range up to 5,000 feet, depending on cable used
- Up to 4 units can be linked together for party line use
- Full ring alert function

TM110 includes:

- Talk N Trace™, 2 units
- Mini headset LB40, 2 units
- 48" cord set, RJ11 to alligator clip set LB31B, 2 pieces
- Nylon pouch PC110

Associated Kit with Talk N Trace™ is on page 18. Kit number: KP110.

Talk N Trace™ Accessories

- TM24 Test lead assembly, 24", banana plug to test probes.
- TM48 Test lead assembly, 48", banana plug to test probes.



Resi-Talker™ Test Set LB300

Our most economical test set for basic telephone system work.

- Tone and Pulse Dialing
- Microphone Mute
- Last Number Redial—32 Digits
- Continuous Line Polarity Indication (TALK or MONITOR)
- Electronic Ringer
- Amplified Line Monitor for volume levels comparable to “off hook” operation
- Modular Cord Set Attachment
- Low Battery Indicator
- Headset Jack
- Battery Powered Monitor Mode with auto power off on dead lines or when disconnected

LB300 includes: • Resi-Talker™ • Alligator clips cord set LB31B

Associated Kit with Resi-Talker™ is on page 23. Kit number: KP312.

NEW



Protective Boot LB81
for any telephone test set

The optional slide-on, cushioned boot makes the telephone test set easier to hold in wet conditions, as well as protecting it from moisture, dust and dirt in field applications.

Test Set Accessories

for Lil' Buttie™, Lil' Buttie Pro™, Resi-Talker™, and Ranger™

- LB10B 48" cord set, RJ11 to alligator clip set
- LB20B 48" cord set, RJ11 to piercing clip set
- LB25 48" cord set, premium, RJ11 to piercing clip set
- LB30B 48" cord set, RJ11 to alligator clip set with strain relief and cloth covering
- LB31B 48" cord set, RJ11 to alligator clip set without either strain relief or cloth covering
- LB35 48" cord, premium, RJ11 to bed of nails and piercing clip set
- LB40B Mini headset with microphone
- LB45B Deluxe headset
- LB60B Two-piece belt clip
- LB64 4-position modtest adapter
- LB66 6-position modtest adapter
- LB68 8-position modtest adapter
- LB70B AT&T hook/clip assembly, yellow
- LB75 Telco clip
- LB80 Nylon pouch holds one telephone test set
- LB81 Protective boot for telephone test set
- LB85B AT&T hook/clip assembly, blue
- PC300 Nylon pouch holds all three: telephone test set, tone tracer and tone generator
- TP21 No-fault RJ12 connector. Use on both RJ11 and RJ45 jacks, 6-conductor. Uses standard telco crimper.





Tone Tracer High-Sensitivity TT100

Sets a new standard for field service professionals. Due to its slim, ergonomic design, as well as balanced weighting, it is the most comfortable tracer available. It can be used with either a wearable headset or a standard cell phone headset. Quick-change tips for easier in-field use. Includes low battery indicator.

TT100 includes: • Tone Tracer • Round tip TT30 • Paddle-style tip TT35

Associated Kits with Tone Tracer are on pages 17–23. Kit numbers: KP100, KP101, KP105, KP106, KP150, KP300, KP400, KP401, KP402-A, KP403, KP406, KP407, KP450, KP500, KP501, KP506-A, KP600, KP601, KP602-A, KP605-A. On page 7: LanScaper™ Kit NT750.



Resi-Tracer™ Tone Detector and Cable Finder TT300

Resi-Tracer combines unique new features for tracing telephone, network, coax, and audio cable with special functions for finding and phasing speakers and testing telephone systems.

- Traces all types of cable: CAT 5/6, telephone, coax
- Audible and visual tone location indication
- Senses Speaker Phasing when used with Resi-Toner™ (TG400)
- Traces coax cable on active systems to eliminate shutdowns
- POTS testing with monitor mode and off-hook listening mode

TT300 includes: • Resi-Tracer™ • Round tip TT30

Associated Kits with Resi-Tracer™ are on pages 23–24. Kit numbers: KP312, KP313, KP314.



Tone Generator Multi-Function TG100/TG101

Our most popular tone generator, with advanced features.

- Three built-in tones, one steady and two warbles, for multiple lines testing
- Constant tone amplitude over life of the battery gives accurate and traceable tones, even at the end of battery life
- Two tone amplitude levels, normal and half, let the user extend the tone reach
- Auto-off protects the battery life
- Tone may be added to any mode for using phone sets without monitor mode
- Power-saver feature in continuity mode preserves battery life
- Separate Talk Battery mode increases voltage and power for test sets
- Modular jack allows multiple cord sets to be used for different applications

TG100 includes: • Tone Generator • Cord set with alligator clips TG10 • 7.5" cable assembly with no-fault RJ12 connectors for RJ11 and RJ45 jacks TP20

Associated Kits with Tone Generator TG100 are on pages 17–23. Kit numbers: KP100, KP300, KP400, KP402-A, KP500, KP501, KP506-A, KP600, KP601, KP602-A, KP605-A.

TG101 includes: • Tone Generator • Cord set with bed of nails TG20 • 7.5" cable assembly with no-fault RJ12 connectors for RJ11 and RJ45 jacks TP20

Associated Kit with Tone Generator TG101 is on page 17. Kit part number: KP101



Turbo-Tone™ High-Powered Tone Generator TG200/TG201

The most powerful tone generator you can put in your pocket. It generates as much as 700% more power than standard tone generators!

- Extra-long distance capability. Detect tone up to 20 miles away.
- Constant amplitude output for 100% signal strength all the time, no signal decrease as battery discharges
- Easily hear signal through walls and enclosures
- Multiple tones and power levels for all applications—
CAT 5/6, signal wire, coax, telephone cable
- Unbalanced tone mode for longer distances on CAT 5/6 cables
- Auto-off for battery conservation
- Full talk battery and constant polarity check
- Includes adapter cables and carrying case
- Available with alligator clip set or bed of nails cord set

Associated Kits with Turbo-Tone™ TG200 are on pages 17–20.
Kit numbers: KP105, KP401, KP403.

TG200 includes: • Turbo-Tone™ with alligator clips molded cord set • 7.5" cable assembly with no-fault RJ12 connectors for RJ11 and RJ45 jacks TP20
• Lanyard • Nylon pouch PC150

TG201 includes: • Turbo-Tone™ with bed of nails molded cord set • 7.5" cable assembly with no-fault RJ12 connectors for RJ11 and RJ45 jacks TP20
• Lanyard • Nylon pouch PC150



Latch-Test™ Security/Alarm Tone Generator TG300

A combination advanced tone generator and continuity tester for sensors, switches and circuits used in security/alarm systems.

Tone Generator Features

- Two tone amplitude levels—normal and half
- Half amplitude is unbalanced for stronger signal on twisted pairs, CAT 5/6 cables
- Three distinctly different tones selected from front panel
- Constant Amplitude Signal over life of battery for 100% signal strength all the time
- Auto-off of tone after 3 hours—no dead battery if left on

Continuity Tester Features

- Four continuity modes—Normally Open (NO), Normally Closed (NC) indication modes, either latched or direct reading
- Audible and visual indication of continuity results; audible can be turned off
- Auto-off after 30 minutes of inactivity

General Features

- Compact, durable case with recessed control panel
- High-quality silicon alligator-clips cable permanently attached
- RJ jack allows use of modular cable without adapters
- Battery low indicator
- Lanyard attachment loop

TG300 includes:
• Latch-Test™ with alligator clips molded cord set
• 7.5" cable assembly with no-fault RJ12 connectors for RJ11 and RJ45 jacks TP20
• Lanyard
• Nylon pouch PC150

Associated Kits with Latch-Test™ are on pages 17, 20.
Kit numbers: KP106, KP406, KP407.



Resi-Toner™ Home Networking Tone Generator TG400

A full-function tone generator with unique features designed to further test connections on telephone systems and speaker installations. Find your outlets and assure your connections with Resi-Toner™.

- “Powers-up” installed telephone lines under actual load conditions with a simulated dial tone to check connectivity and proper wiring configurations without a service connection
- Full-feature tone generator with 3 different tone sounds and continuity test
- Generates a unique tone sequence for testing speaker installations by “popping” speakers—will work with either AC- or DC-coupled speaker types
- Requires 9 volt battery (not included)

TG400 includes: • Resi-Toner™ with alligator clips molded cord set
• 7.5" cable assembly with no-fault RJ12 connectors for RJ11 or RJ45 jacks TP20 • Cord set with alligator clips TG10

Associated Kits with Resi-Toner™ are on pages 23–24. Kit numbers: KP312, KP313.



Speaker Seeker™ Wiremapping Tool TP400/TP410

NEW

Wiremapping is the ability to identify and match-up both ends of installed cable. With the Speaker Seeker, one installer can completely map out a cable installation quickly and accurately—and elevate the job to a professional level. Wiremapping and labeling is the beginning of a good installation every time!

- TP400—*Speaker and Security/Alarm Wires*: Wiremaps up to 20 individual runs at a time by using 20 wiremap remote identifiers (TP315). They are specially wired with alligator clips attached to unterminated paired cable ends, individually labeled with numbers 1 through 20. Simply touching the unterminated ends of the cable run to the contact points of the Speaker Seeker results in its LED readout displaying the unique number of the TP315 remote identifier attached to the other end of the run.
- TP410—*Coax Cables* can be identified by attaching the LB32 coax to alligator-clip adapter to the coax jack on Speaker Seeker. Then the cable can be identified by using either an unterminated TP315 remote identifier (which can be purchased from your local Test-Um distributor), or one of the TP311 coax remote identifiers.

TP400 (speaker/security version) includes:
• Speaker Seeker™ • Coax-to-alligator-clip adapter LB32 • Cord set with alligator clips TG10
• Individually-numbered unterminated remote identifiers, 20 pieces TP315

TP410 (coax version) includes:
• Speaker Seeker™ • Coax-to-alligator-clip adapter LB32 • Cord set with alligator clips TG10
• Individually-numbered coax cable wiremappers, 20 pieces TP311

Tone Tracer and Tone Generator Accessories

- LB22 “No-Twist” telephone handset cord adapter
- LB34 18" cable assembly, “F” push-on plug to RJ11 plug
- PC100 Pouch holds one tone tracer
- PC200 Pouch holds both tone tracer and tone generator
- PC300 Pouch holds all three:
telephone test set, tone tracer and tone generator

- TG10 24" cord set, RJ11 to alligator clip set
- TG20 24" cord set, RJ11 to bed of nails cord set
- TP20 7.5" cable assembly, with no-fault RJ12 connectors for RJ11 or RJ45 jacks.
- TT30 Round tip for tone tracer
- TT35 Paddle-style tip for tone tracer



Professional Tone & Trace Field Kits KP100/KP101

High Sensitivity **Tone Tracer** and **Multi-Function Tone Generator** in a nylon pouch. A closure flap protects equipment; includes both a belt loop and a metal clip ring for multiple mounting options.

KP100 Field Kit includes:

- **Tone Tracer**
High Sensitivity TT100
- **Tone Generator**
Multi-function TG100
- **Cord set** with alligator clips TG10
- **7.5" cable assembly** with no-fault RJ12 connectors for RJ11 and RJ45 jacks TP20
- **Round tip** for Tone Tracer TT30
- **Paddle-style tip** for Tone Tracer TT35
- **Lanyard**
- **Nylon pouch** PC200

KP101 Field Kit includes:

- **Tone Tracer**
High Sensitivity TT100
- **Tone Generator**
Multi-function TG100
- **Cord set** with bed of nails TG20
- **7.5" cable assembly** with no-fault RJ12 connectors for RJ11 and RJ45 jacks TP20
- **Round tip** for Tone Tracer TT30
- **Paddle-style tip** for Tone Tracer TT35
- **Lanyard**
- **Nylon pouch** PC200



High-Powered Tone & Trace Field Kit KP105

High Sensitivity **Tone Tracer** and **Turbo-Tone™** in a nylon pouch.

KP105 Field Kit includes:

- **Tone Tracer** High Sensitivity TT100
- **Turbo Tone™** with alligator clips molded cord set TG200
- **7.5" cable assembly** with no-fault RJ12 connectors for RJ11 and RJ45 jacks TP20
- **Round tip** for Tone Tracer TT30
- **Paddle-style tip** for Tone Tracer TT35
- **Lanyard**
- **Nylon pouch** PC200



Security/Alarm Tone & Trace Field Kit KP106

High Sensitivity **Tone Tracer** and **Latch-Test™** in a nylon pouch.

KP106 Field Kit includes:

- **Tone Tracer** High Sensitivity TT100
- **Latch-Test™** with alligator clips molded cord set TG300
- **7.5" cable assembly** with no-fault RJ12 connectors for RJ11 and RJ45 jacks TP20
- **Round tip** for Tone Tracer TT30
- **Paddle-style tip** for Tone Tracer TT35
- **Lanyard**
- **Nylon pouch** PC200



Communications

Field Kit KP110

Two Talk N Trace™ units in a nylon pouch.

KP110 Field Kit includes:

- Talk N Trace™, 2 units TM110
- RJ12 to alligator clip, 2 pieces
- 24" test lead assembly, banana plug/test probes TM24
- Mini head set, 2 sets LB40
- Nylon pouch PC110



Signal Tracer

Field Kit KP150

High Sensitivity Tone Tracer in a nylon pouch.

KP150 Field Kit includes:

- Tone Tracer TT100
- Round tip TT30
- Paddle-style tip TT35
- Nylon pouch PC100



Basic Telco

Field Kit KP200

Lil' Buttie™ with bed of nails cord set in a nylon pouch.

KP200 Field Kit includes:

- Lil' Buttie™ LB110
- Bed of nails cord set LB35
- Mini headset LB40
- Nylon pouch LB80
- Metal belt clip



Deluxe Telco

Field Kit KP220

Lil' Buttie Pro™ with bed of nails cord set in a nylon pouch.

KP220 Field Kit includes:

- Lil' Buttie Pro™ LB220
- Bed of nails cord set LB35
- Mini headset LB40
- Nylon pouch LB80
- Two-piece belt clip LB60



Telco/Signal Tracing Field Kit KP300

Lil' Buttie™ with bed of nails cord set, High Sensitivity Tone Tracer and Multi-Function Tone Generator in a nylon pouch.

KP300 Field Kit includes:

- Lil' Buttie™ LB110
- Bed of nails cord set LB35
- Mini headset LB40
- Metal belt clip
- Tone Tracer High Sensitivity TT100
- Round tip for Tone Tracer TT30
- Paddle-style tip for Tone Tracer TT35
- Tone Generator Multi-function TG100
- Cord set with alligator clips TG10
- 7.5" cable assembly with no-fault RJ12 connectors for RJ11 and RJ45 jacks TP20
- Lanyard
- Nylon pouch PC300



Professional Telco Field Kit KP400

Lil' Buttie Pro™ with bed of nails cord set, High Sensitivity Tone Tracer and Multi-Function Tone Generator with alligator clips in a nylon pouch. This deluxe combo kit is the crème de la crème of our product line—in a tough nylon kit pouch with a protective flap and velcro closure. It holds all the accessories for the Lil' Buttie Pro™, the Tone Tracer and Tone Generator. Everything necessary is in one place, ready to go to work. If you are looking for the Rolls Royce of test equipment, here it is. Move up in the world with this deluxe combo kit.

KP400 Field Kit includes:

- Lil' Buttie Pro™ LB220
- Bed of nails cord set LB35
- Mini headset LB40
- Two-piece belt clip LB60
- Tone Tracer High Sensitivity TT100
- Round tip for Tone Tracer TT30
- Paddle-style tip for Tone Tracer TT35
- Tone Generator Multi-function TG100
- Cord set with alligator clips TG10
- 7.5" cable assembly with no-fault RJ12 connectors for RJ11 and RJ45 jacks TP20
- Lanyard
- Nylon pouch PC300



High-Powered Telco Field Kit KP401

Lil' Buttie Pro™ with bed of nails cord set, High Sensitivity Tone Tracer and Multi-Function Turbo-Tone™ Generator in a nylon pouch.

KP401 Field Kit includes:

- Lil' Buttie Pro™ LB220
- Bed of nails cord set LB35
- Mini headset LB40
- Two-piece belt clip LB60
- Tone Tracer High Sensitivity TT100
- Round tip for Tone Tracer TT30
- Paddle-style tip for Tone Tracer TT35
- Turbo-Tone™ TG200
- 7.5" cable assembly with no-fault RJ12 connectors for RJ11 and RJ45 jacks TP20
- Lanyard
- Nylon pouch PC300



Deluxe Telco/Signal Tracing Field Kit KP402-A

Ranger™ Test Set with ADLI and bed of nails cord set, High Sensitivity Tone Tracer and Multi-Function Tone Generator in a nylon pouch.

KP402-A Field Kit includes:

- Ranger™ LB255
- Bed of nails cord set LB35
- Mini headset LB40
- Tone Tracer High Sensitivity TT100
- Round tip for Tone Tracer TT30
- Paddle-style tip for Tone Tracer TT35
- Tone Generator Multi-function TG100
- Cord set with alligator clips TG10
- 7.5" cable assembly with no-fault RJ12 connectors for RJ11 and RJ45 jacks TP20
- Lanyard
- Nylon pouch PC300



Deluxe High-Powered Field Kit KP403

Ranger™ Test Set with ADLI and bed of nails cord set, High Sensitivity Tone Tracer and Multi-Function Turbo-Tone™ Generator in a nylon pouch.

KP403 Field Kit includes:

- Ranger™ LB255
- Bed of nails cord set LB35
- Mini headset LB40
- Tone Tracer High Sensitivity TT100
- Round tip for Tone Tracer TT30
- Paddle-style tip for Tone Tracer TT35
- Turbo-Tone™ TG200
- 7.5" cable assembly with no-fault RJ12 connectors for RJ11 and RJ45 jacks TP20
- Lanyard
- Nylon pouch PC300



Security/Alarm Field Kit KP406

Lil' Buttie Pro™ with bed of nails cord set, headset and a two-piece belt clip; High Sensitivity Tone Tracer with a round tip and a paddle-style tip; and Latch-Test™ with molded cord set with alligator clips in a nylon pouch.

KP406 Field Kit includes:

- Lil' Buttie Pro™ LB220
- Bed of nails cord set LB35
- Mini headset LB40
- Two-piece belt clip LB60
- Tone Tracer High Sensitivity TT100
- Round tip for Tone Tracer TT30
- Paddle-style tip for Tone Tracer TT35
- Latch-Test™ TG300
- 7.5" cable assembly with no-fault RJ12 connectors for RJ11 and RJ45 jacks TP20
- Lanyard
- Nylon pouch PC300



Deluxe Security/Alarm Field Kit KP407

Ranger™ Test Set with ADLI and bed of nails cord set, High Sensitivity Tone Tracer and Latch-Test™ with molded cord set with alligator clips in a nylon pouch.

KP407 Field Kit includes:

- Ranger™ LB255
- Bed of nails cord set LB35
- Mini headset LB40
- Tone Tracer High Sensitivity TT100
- Round tip for Tone Tracer TT30
- Paddle-style tip for Tone Tracer TT35
- Latch-Test™ TG300
- 7.5" cable assembly with no-fault RJ12 connectors for RJ11 and RJ45 jacks TP20
- Lanyard
- Nylon pouch PC300



Length Measurement & Tracing Kit KP450

LanRoamerPRO™ CAT 5/6 tester with one remote, High Sensitivity Tone Tracer and a 12" cable assembly RJ45/alligator clip in a zippered case.

KP450 Kit includes:

- LanRoamerPRO™ TP600
- Remote #1 TP609
- 12" cable assembly, RJ45 to alligator clip set TP40
- 12" cable assembly, unshielded RJ45 connectors, 2 pieces TP56
- Wire configuration sticker
- Laminated quick reference card
- Tone Tracer High Sensitivity TT100
- Round tip for Tone Tracer TT30
- Paddle-style tip for Tone Tracer TT35
- Zippered tool case TK200



Compact Total Test Kit KP500

LanRoamer™ CAT 5/6 tester, Lil' Buttie Pro™ with bed of nails cord set, High Sensitivity Tone Tracer and Multi-Function Tone Generator with alligator clips in a zippered case.

KP500 Kit includes:

- LanRoamer™ TP500
- Remote #1 TP505
- 12" cable assembly, unshielded RJ45 connectors, 2 pieces TP56
- Lil' Buttie Pro™ LB220
- Bed of nails cord set LB35
- Mini headset LB40
- Two-piece belt clip LB60
- Tone Tracer High Sensitivity TT100
- Round tip for Tone Tracer TT30
- Paddle-style tip for Tone Tracer TT35
- Tone Generator Multi-function TG100
- Cord set with alligator clips TG10
- 7.5" cable assembly with no-fault RJ12 connectors for RJ11 and RJ45 jacks TP20
- Zippered tool case TK200



CAT 5/6 Test and Telco Kit KP501

LanRoamerPRO™ CAT 5/6 tester, Lil' Buttie Pro™ with bed of nails cord set, High Sensitivity Tone Tracer and Multi-Function Tone Generator with alligator clips in a zippered case.

KP501 Kit includes:

- LanRoamerPRO™ TP600
- Remote #1 TP609
- 12" cable assembly, RJ45 to alligator clip set TP40
- 12" cable assembly, unshielded RJ45 connectors, 2 pieces TP56
- Wire configuration sticker
- Laminated quick reference card
- Lil' Buttie Pro™ LB220
- Bed of nails cord set LB35
- Mini headset LB40
- Two-piece belt clip LB60
- Tone Tracer High Sensitivity TT100
- Round tip for Tone Tracer TT30
- Paddle-style tip for Tone Tracer TT35
- Tone Generator Multi-function TG100
- Cord set with alligator clips TG10
- 7.5" cable assembly with no-fault RJ12 connectors for RJ11 and RJ45 jacks TP20
- Zippered tool case TK200



Deluxe CAT 5/6 Test and Telco Kit KP506-A

LanRoamerPRO™ CAT 5/6 tester, Ranger™ Test Set with ADLI and bed of nails cord set, High Sensitivity Tone Tracer and Multi-Function Tone Generator with alligator clips in a zippered case.

KP506-A Kit includes:

- LanRoamerPRO™ TP600
- Remote #1 TP609
- 12" cable assembly, RJ45 to alligator clip set TP40
- 12" cable assembly, unshielded RJ45 connectors, 2 pieces TP56
- Wire configuration sticker
- Laminated quick reference card
- Ranger™ LB255
- Bed of nails cord set LB35
- Mini headset LB40
- Tone Tracer High Sensitivity TT100
- Round tip for Tone Tracer TT30
- Paddle-style tip for Tone Tracer TT35
- Tone Generator Multi-function TG100
- Cord set with alligator clips TG10
- 7.5" cable assembly with no-fault RJ12 connectors for RJ11 and RJ45 jacks TP20
- Zippered tool case TK200



Total Pro Test Kit KP600

LanRoamer™ CAT 5/6 tester, Lil' Buttie Pro™ with bed of nails cord set, High Sensitivity Tone Tracer and Multi-Function Tone Generator with alligator clips in a deluxe 26-pocket case.

KP600 Test Kit includes:

- LanRoamer™ TP500
- Remote #1 TP505
- 12" cable assembly, unshielded RJ45 connectors, 2 pieces TP56
- Lil' Buttie Pro™ LB220
- Bed of nails cord set LB35
- Mini headset LB40
- Two-piece belt clip LB60
- Tone Tracer High Sensitivity TT100
- Round tip for Tone Tracer TT30
- Paddle-style tip for Tone Tracer TT35
- Tone Generator Multi-function TG100
- Cord set with alligator clips TG10
- 7.5" cable assembly with no-fault RJ12 connectors for RJ11 and RJ45 jacks TP20
- Deluxe tool case TK100



Deluxe Total Pro Test Kit KP601

LanRoamerPRO™ CAT 5/6 tester, Lil' Buttie Pro™ with bed of nails cord set, High Sensitivity Tone Tracer and Multi-Function Tone Generator with alligator clips in a deluxe 26-pocket case.

KP601 Test Kit includes:

- LanRoamerPRO™ TP600
- Remote #1 TP609
- 12" cable assembly, RJ45 to alligator clip set TP40
- 12" cable assembly, unshielded RJ45 connectors, 2 pieces TP56
- Wire configuration sticker
- Laminated quick reference card
- Lil' Buttie Pro™ LB220
- Bed of nails cord set LB35
- Mini headset LB40
- Two-piece belt clip LB60
- Tone Tracer High Sensitivity TT100
- Round tip for Tone Tracer TT30
- Paddle-style tip for Tone Tracer TT35
- Tone Generator Multi-function TG100
- Cord set with alligator clips TG10
- 7.5" cable assembly with no-fault RJ12 connectors for RJ11 and RJ45 jacks TP20
- Deluxe tool case TK100



Deluxe Total Pro Test Kit with Ranger™ Test Set KP602-A

LanRoamerPRO™ CAT 5/6 tester, Ranger™ Test Set with ADLI and bed of nails cord set, High Sensitivity Tone Tracer and Multi-Function Tone Generator with alligator clips in a deluxe 26-pocket case.

KP602-A Test Kit includes:

- LanRoamerPRO™ TP600
- Remote #1 TP609
- 12" cable assembly, RJ45 to alligator clip set TP40
- 12" cable assembly, unshielded RJ45 connectors, 2 pieces TP56
- Wire configuration sticker
- Laminated quick reference card
- Ranger™ LB255
- Bed of nails cord set LB35
- Mini headset LB40
- Tone Tracer High Sensitivity TT100
- Round tip for Tone Tracer TT30
- Paddle-style tip for Tone Tracer TT35
- Tone Generator Multi-function TG100
- Cord set with alligator clips TG10
- 7.5" cable assembly with no-fault RJ12 connectors for RJ11 and RJ45 jacks TP20
- Deluxe tool case TK100



Total Pro Test Kit with Ranger™ Test Set KP605-A

LanRoamer™ CAT 5/6 tester, Ranger™ Test Set with ADLI and bed of nails cord set, High Sensitivity Tone Tracer and Multi-Function Tone Generator with alligator clips in a deluxe 26-pocket case.

KP605-A Test Kit includes:

- LanRoamer™ TP500
- Remote #1 TP505
- 12" cable assembly, unshielded RJ45 connectors, 2 pieces TP56
- Ranger™ LB255
- Bed of nails cord set LB35
- Mini headset LB40
- Tone Tracer High Sensitivity TT100
- Round tip for Tone Tracer TT30
- Paddle-style tip for Tone Tracer TT35
- Tone Generator Multi-function TG100
- Cord set with alligator clips TG10
- 7.5" cable assembly with no-fault RJ12 connectors for RJ11 and RJ45 jacks TP20
- Deluxe tool case TK100



Deluxe Resi Kit KP312

The ultimate in residential cabling test, talk, and tracing. This kit contains everything needed to find, fix, and verify network, telephone, audio, and coaxial cable in all system sizes.

KP312 Test Kit includes:

- Resi-Tester™ TP300
- Remote #1 TP309
- Coax Remote Identifier #1 TP65
- 12" cable assembly, RJ45 to alligator clip set TP40
- Resi-Toner™ TG400
- Cord set with alligator clips TG10
- Resi-Talker™ LB300
- Alligator clips cord set LB31B
- Resi-Tracer™ TT300
- Coax wiremapper set, 20 pieces TP311
- RJ45 wiremapper set, 20 pieces TP312
- RJ11 wiremapper set, 20 pieces TP314
- 7.5" cable assembly with no-fault RJ12 connectors for RJ11 and RJ45 jacks, 2 pieces TP20
- 24" RJ45 cable assembly with 8 alligator clips, 2 pieces TP68
- Zippered tool case TK200



Tone and Trace Kit KP313

Includes a **Resi-Toner™** and **Resi-Tracer™** that work in concert to trace and identify coax, network, telephone, and audio cables. Test telephone systems and speakers systems for clarity, and detect coax lines without disconnecting powered systems.

KP313 Kit includes:

- **Resi-Toner™** TG400
- **Resi-Tracer™** TT300
- **7.5" cable assembly** with no-fault RJ12 connectors for RJ11 and RJ45 jacks TP20
- **Cord set** with alligator clips TG10
- **Zippered tool case** TK200



Test and Trace Kit KP314

This kit includes the powerful duo of the **Resi-Tester™** and **Resi-Tracer™** to test and trace all the cables found in a whole-house system: network, telephone, audio, and coax.

KP314 Kit includes:

- **Resi-Tester™** TP300
- **Remote #1** TP309
- **Coax Remote Identifier #1** TP65
- **12" cable assembly**, RJ45 to alligator clip set TP40
- **Resi-Tracer™** TT300
- **7.5" cable assembly** with no-fault RJ12 connectors for RJ11 and RJ45 jacks TP20
- **Zippered tool case** TK200



Total Test-Wiremapping Kit KP315

Includes a **Resi-Tester™**, all three 20-piece wiremapper sets for network, telephone, and coax, as well as our special cable assembly for non-terminated paired speaker and security cables. Finding the other end of a cable run has just become easier than ever.

KP315 Kit includes:

- **Resi-Tester™** TP300
- **Remote #1** TP309
- **Coax Remote Identifier #1** TP65
- **12" cable assembly**, RJ45 to alligator clip set TP40
- **7.5" cable assembly** with no-fault RJ12 connectors for RJ11 and RJ45 jacks TP20
- **Coax wiremapper set**, 20 pieces TP311
- **RJ45 wiremapper set**, 20 pieces TP312
- **RJ11 wiremapper set**, 20 pieces TP314
- **24" RJ45 cable assembly** with 8 alligator clips, 2 pieces TP68
- **Zippered tool case** TK200

Security/Alarm System Adapter Kit for LanRoamerPRO™ KP410

Designed to help a security/alarm installer use our LanRoamerPRO™ Test Kit cable tester as a wire-mapping device for multiple sensors and switches in a security/alarm system.

- The adapter cables come with 9 test cord sets with alligator clips on one end that attach to the wires of the respective switch or sensor. The other end can then be plugged into a remote on the LanRoamerPRO™, which provides a numbered ID for determining the location of a specific switch/sensor at the control panel.
- Identifies each location easy and fast, thereby extending the capability of the LanRoamerPRO™.



KP410 Kit includes:

- 12" cable assembly, RJ45 to alligator clip set, 9 pieces TP40
- 6-position mod-test adapter LB66
- Zippered pouch

Coax Adapter Kit for LanRoamerPRO™ KP411

KP411 Kit includes:

- RJ45 to Coax Adapter, 9 pieces TP50
- Zippered pouch

**Master Adapter Kit KP421**

Go from any type of cable to any other type for testing, tracing, or talking. The adapters and cable assemblies make it easy to interconnect any cable types.

KP421 Kit includes:

- | | | |
|------------------|------------------|------------------|
| • LB64, 1 piece | • TP60, 2 pieces | • TP70, 2 pieces |
| • LB66, 1 piece | • TP62, 2 pieces | • TP72, 2 pieces |
| • TP50, 2 pieces | • TP63, 2 pieces | • Plastic case |



Telephone Test Set Accessories

Adapters

- LB22 "No Twist" for telephone handset cord
- LB64 4-position modtest
- LB66 6-position modtest
- LB68 8-position modtest

Clips



- LB60B Two-piece belt clip
- LB70B AT&T hook/clip assembly—yellow
- LB75 Telco clip
- LB85B AT&T hook/clip assembly—blue

Cord Sets

- LB10B 48", RJ11 to alligator clip set with strain relief
- LB20B 48", RJ11 to piercing clip set with strain relief
- LB25 48", premium, RJ11 to piercing clip set
- LB30B 48", RJ11 to bed of nails with strain relief
- LB31B 48", RJ11 to alligator clip set
- LB35 48", premium, RJ11 to bed of nails and piercing clip set

Headsets



- LB40B Mini headset
- LB45B Deluxe, full size headset with adjustable head band

Tester and Tracing Accessories

Adapters



- TP50 RJ45 to F coax, 1 piece
- TP60 RJ45 plug/RJ11 jack, 2 pieces
- TP62 F plug to BNC jack
- TP63 F jack to BNC jack
- TP70 RJ45 plug to BNC jack
- TP72 BNC plug to F jack

Cable Assemblies

- LB32 24", F push-on plug to alligator clip set
- LB34 18", F push-on plug to RJ11 plug
- TP10 7.5", RJ45 to modular plug for either RJ11 and RJ45 jack
- TP20 7.5", no-fault RJ12 connectors for RJ11 or RJ45 jacks
- TP21 No-fault RJ12 replacement connector for TP10 and TP20
- TP40 12", RJ45 to alligator clip set
- TP55 12", shielded, RJ45 connectors
- TP56 12", unshielded, RJ45 connectors
- TP68 24", RJ45 with 8 alligator clips

Cord Sets

- TG10 24", RJ11 to alligator clip set for tone generator
- TG20 24", RJ11 to bed of nails for tone generator

Remotes Identifiers & Terminators



- TP309 Resi-Tester™ #1 replacement remote
- TP310 Set of 10 (1–10) coax remote identifiers for Resi-Tester™

- TP311 Set of 20 coax remote identifiers for Resi-Tester™
- TP312 Set of 20 RJ45 wiremappers for Resi-Tester™
- TP314 Set of 20 RJ11 wiremappers for Resi-Tester™
- TP505 LanRoamer™ #1 replacement remote
- TP608 Set of 7 network remote identifiers for Resi-Tester™, LanScaper™ and LanRoamerPRO™
- TP609 #1 remote identifier for LanScaper™ and LanRoamerPRO™
- TP65 #1 coax remote identifier for Resi-Tester™
- CX31 #1 brown terminator for Coax Mapper (CX200)
- CX32 #2 red terminator for Coax Mapper (CX200)
- CX33 #3 orange terminator for Coax Mapper (CX200)
- CX34 #4 yellow terminator for Coax Mapper (CX200)

Test Leads

- TM24 24", banana plug to test probes
- TM48 48", banana plug to test probes

Tracer Tips

- TT30 Round tip for tone tracer
- TT35 Paddle-style tip for tone tracer

Rugged Nylon Pouches & Tool Cases

- LB80 holds one telephone test set
- NT930 Validator or Validator-NT deluxe carrying case
- NT950 Validator or Validator-NT stand alone pouch
- PC100 holds one tone tracer
- PC150 holds one Resi-Tester™, Testifier™, LanScaper™, LanRoamer™ or LanRoamerPRO™
- PC200 holds both tone tracer and tone generator
- PC300 holds all three: telephone test set, tone tracer and tone generator
- PC400 holds one Resi-Tester™, Testifier™, LanScaper™ or LanRoamerPRO™ Kit with remotes
- TK100 Deluxe, 26-pocket tool case
- TK200 Zippered, 8-pocket tool case

Testers and Certifiers

Products	Wire Pair Map/Test	Direct Fault Indicator	Remote Included	Tone Generator	Auto Off	CAT Cables	Coax	LCD Display	Voltage On Line	Works w/ Wire Map Kit?	Wire Length	One-Ended Testing	Jack ID Test	Distance to Fault	Ethernet Info / Ping Capability	CAD (Design) Program	Certifies Systems
Tell-All Indicator TP100, page 7					X	X			X			X	X				
LanRoamer™ TP500, page 8	X	X	X	X	X	X						X					
Resi-Tester™ TP300, page 9	X	X	X	X	X	X	X	X	X	X							
Testifier™ TP350, page 9	X	X	X	X	X	X	X	X	X	X							
LanRoamer PRO™ TP600, page 8	X	X	X	X	X	X	w/adaptor	X	X	X	X	X		open only			
LanScape™ NT700, page 7	X	X	X	X	X	X	w/adaptor	X	X	X	X	X	X	open only	X*		
Validator™ NT950, page 4	X	X	X	X	X	X	X	X	X	X	X	X		X		X	X
Validator-NT™ NT955, page 5	X	X	X	X	X	X	X	X	X	X	X	X	X	X	X**	X	X

Tone Generators

Products	Multipule Tones	Amplitude Control	Modular Jack	Alligator Clips	Squarewave Output	Sinewave Output	Transmit Through Walls	Continuity Test	POTS Simulation	Speaker POP	High Current Signal (Short)
Tone Generator TG100, page 14	3	X	X	X	X	X	1 ft.***	X			60mA p-p
Turbo-Tone™ TG200, page 15	3	X	X	X	X	X	3 ft.***	X			90mA p-p
Latch-Test™ TG300, page 15	3	X	X	X	X	X	1 ft.***	X			60mA p-p
Resi-Toner™ TG400, page 16	3	X	X	X	X	X	1 ft.***	X	X	X	7mA p-p

*ping @ 10Mb speed only
**ping @ 10/100/1000Mb speed

*** when using earth ground on one lead

Tracers—aka: Inductive Receivers

Products	Works with Any Tone Generator	2.5 mm Ear Jack Plug	Volume Control	Changeable Tips	Magnetic Coil Pick Up	Phone Monitor	On Hook Monitor	Speaker Phase Tester	Electric Field Pick Up	Magnetic Field Pick Up
Tone Tracer TT 100, page 14	X	X	X	X					X	
Resi-Tracer™ TT 300, page 14	X		X	X	X	X	X	X	X	X****

**** optimized for 80KHz AM signal but will demodulate 100Hz~1MHz

Telephone Test Sets

Products	Tone/Pulse Dialing	Last Number Redial	Number Memory	Continuous Line Polarity	Electronic Ringer	LCD Display	Headset Option	Amplified Line Monitor	DTMF Decode	Auto Dial Line ID	DSL Safe	Amplified Speaker	Microphone Mute	Modular Cord Set Attachment	Auto Off	Volt/rmA Meter
Lil' Buttie™ LB100, page 11	X		10	X	X		X	X					X	X	X	
Resi-Talker™ LB300, page 13	X		10	X	X		X	X					X	X	X	
Lil' Buttie Pro™ LB220, page 11	X		5	X	X		X	X					X	X	X	X
Ranger™ LB255, page 12	X	24 digits	8	X	X		X	X	X	X	X	3 levels	X	X	X	X

Test-Um Inc.

The Intelligent Test Solutions Company

805-383-1500 • FAX 805-383-1595 • www.test-um.com
808 Calle Plano • Camarillo, CA 93012

Your local distributor is:

